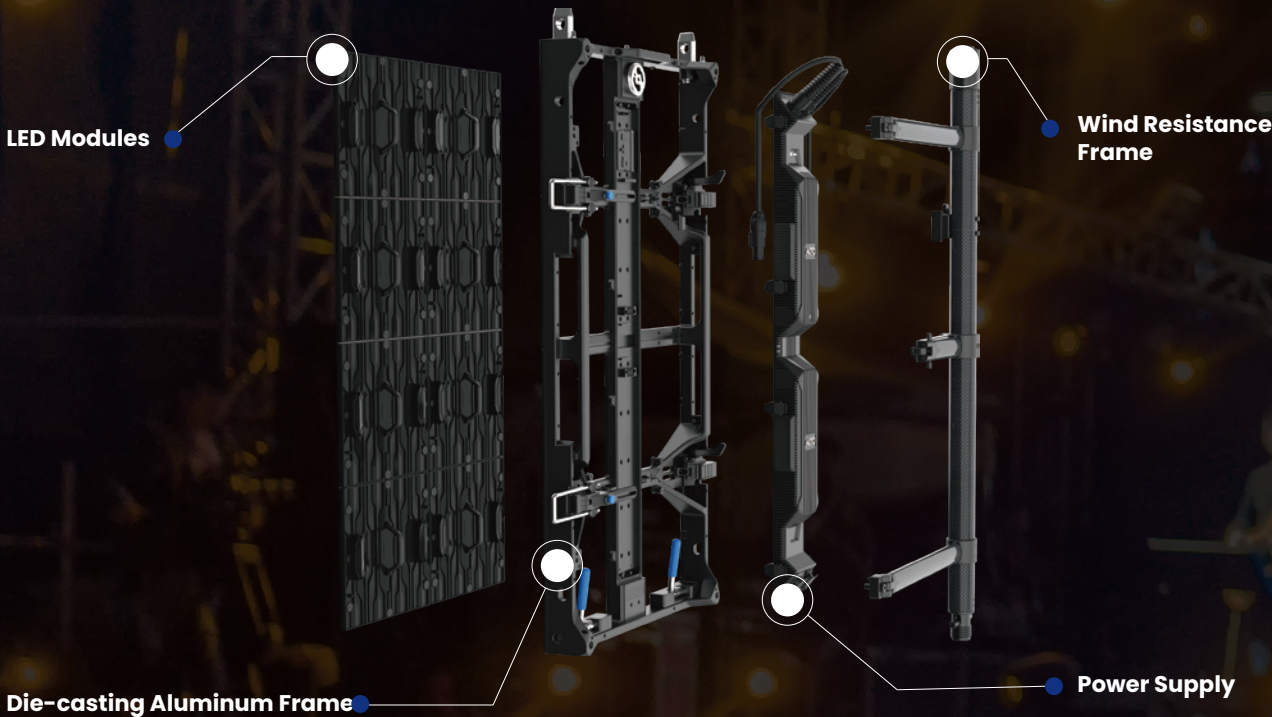


Excellent Display



- 7680 Hz refresh rate
- 160° view angle
- 8000:1 contrast ratio

Concise Structure Design



Specifications

Model	SV3.9
Pixel Pitch	3.91 mm
Type of LED	SMD
Pixel Density	65,536 dots/m²
Pixel Composition	1R 1G 1B
Module Size	250(W) x 250(H)
Cabinet Size	500(W) x 1000(H) x 104(D)
Cabinet Resolution	128(W) x 256(H) =32,768/dots
Cabinet Weight	14.8 kg
Cabinet Area	0.5 m²
Cabinet Material and Color	Magnesium alloy, Black
Curve	-10°, -5°, 0°, 5°, 10°
Calibrated Brightness	≥5000 nits
Viewing Angle	H:160°±10°; V:160°±10°
Color Temperature	2800-9300 K
Refresh Rate	7680 Hz
Contrast Ratio	8000:1
Input Voltage	100-240V,50/60Hz
Max Power	380 W/Cabinet
Average Power	120 W/Cabinet
IP Rating	Outdoor
Maintenance	Front & Rear
Lifespan	100,000 Hours
Operating Environment	Temperature: -20°C-50°C; Humidity: 10%-90%RH

*The specifications are for reference, actual parameter may vary based on the special model or contract.

AOTO (HQ)

Email: led@aoto.com Tel: +86 755 2671 9655



Facebook



LinkedIn



Website

AOTO ELECTRONICS (US) LLC
Email: support@us.aoto.com
Tel: +(949) 421-3104

奥拓電子日本株式会社
Email: jp_support@aoto.com
Tel: +81-(0)3-6231-9126

AOTO ELECTRONICS (DUBAI, UAE)
Email: eu_support@aoto.com
Tel: +34 934 17 65 97

AOTO ELECTRONICS (SPAIN), S.L.
Email: eu_support@aoto.com
Tel: +34 934 17 65 97

AOTO ELECTRONICS (HONG KONG) CO.,LIMITED
Email: hk_support@aoto.com
Tel: +852 6466 6797

AOTO ELECTRONICS (RIYADH, KSA)
Email: eu_support@aoto.com
Tel: +34 934 17 65 97

AOTO ELECTRONICS (UK) LTD.
Email: uk_support@aoto.com
Tel: +44(0)20 8560 8828

AOTO ELECTRONICS (THAILAND) CO.,LTD.
Email: hk_support@aoto.com
Tel: +852 6466 6797

SV Series

Create the Stunning Stage Visual



Gale 8 Resistance



Convenient Transit

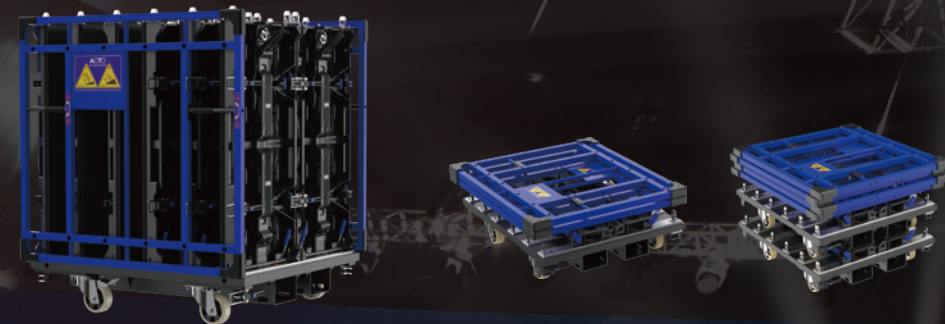


Magnetic Components



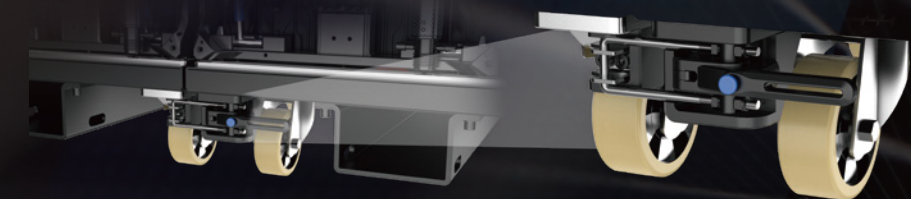
Mechanized Installation

| Smart Dolly for Storage, Transit & Installation



12 Cabinets

Each trolley can contain 12pcs panels during the storage and transit.
The trolley could be stacked to save space when the panels are out for usage.

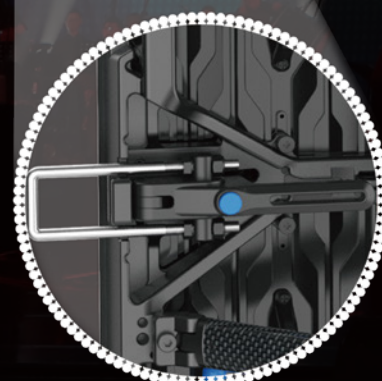
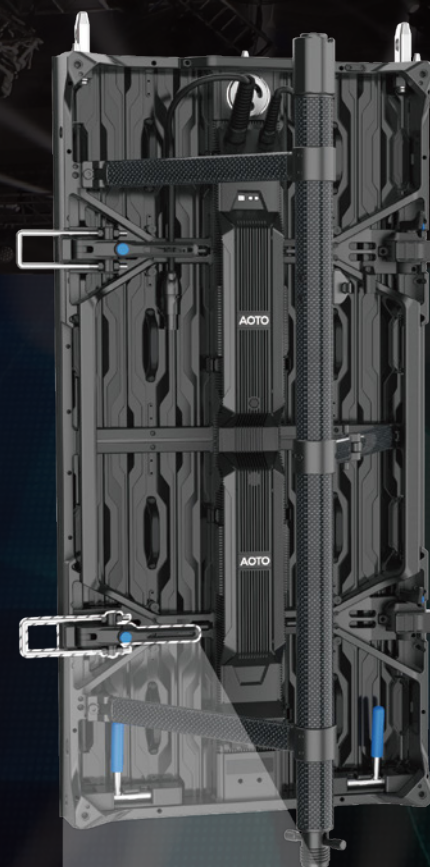


Strong Dolly Connection

Each trolley has a solid locker to connect the other trolley horizontally, it aims to reach the stable shifting in the trunk.
The strong and thick lockers can hold a line of trolleys still even the trunk is on a bumpy road.



| Safety Always the Priority



Force 8 Gale Resistance

The wind resistance level could be up to Force 8 Gale, or 20m/s, due to the carbon fiber frame at the back of the panel with special design.

Automatic Self-locking

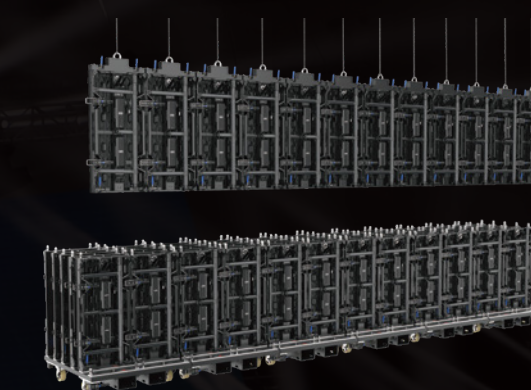
The wind resistance tool has automatic self-locking design after its fully stretching, drastically saving time and safety providing.

Solid Cabinet Connection

Cabinet connection is quite crucial when doing hanging installation and during the usage, thus the lockers are designed to be solid and thick to strength the connection reliability.



| Flexible & Labor-saving Application



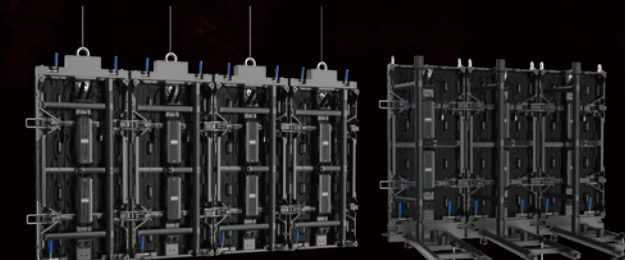
Support Mechanized Installation

The design of SV series is supported mechanized installation to reduce human labor work as well as enhance the work efficiency.



Adjustable Curved Installation

The adjustable metal column support flat installation and accurate $\pm 5^\circ$, $\pm 10^\circ$ arc installation with self scale and lock structure.



Stacking or Hanging Installation

This product supports hanging and stacking installation, giving more options for setting up the stage based on the actual installation condition.